

# Johkasou System

(Advanced onsite wastewater treatment system)

KUBOTA JOHKASOU SYSTEM CO.,LTD



# Who is Kubota?

- **Established in 1890**
- **Consolidated Sales 14.5 Billion US\$ in 2016**
- **Employee 38,291 Peoples (Dec.2016)**
- **Business Activity**  
**Agricultural Machinery, Engines, Pipes,**  
**Pumps, Valves, Environmental**  
**Engineering**

# Kubota Group's overseas business sites



● Overseas offices   ● Main overseas affiliates   ● Production sites



# Farm & Industrial Machinery



**Tractor**



**Combine**



**Residential  
Commercial Mower**



**Diesel  
Engines**



**Construction  
Equipment**



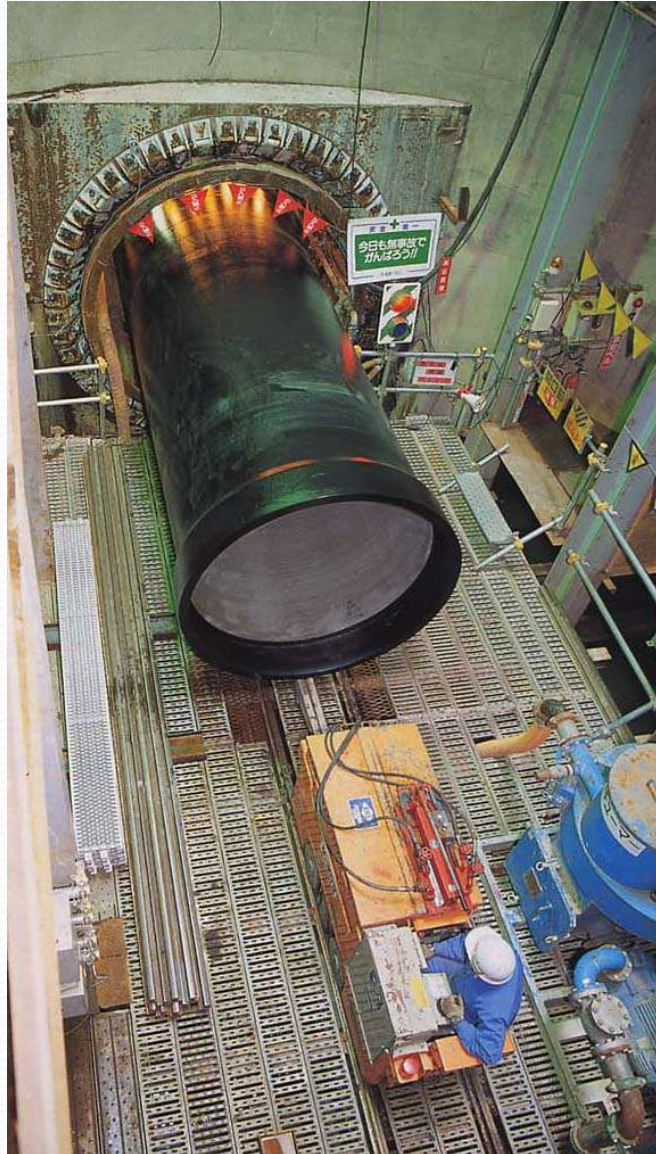
# Infrastructure, Pipes



**Cast Steel Columns**



**Butterfly Valves**



**Steel Pipe**



**Ductile Iron Pipe**



# Water, Wastewater, Environmental Engineering



**Water & Wastewater  
Engineering**



**Submerged Membrane  
Unit (MBR)**



**Anaerobic MBR**



**Sludge Treatment  
Plant**



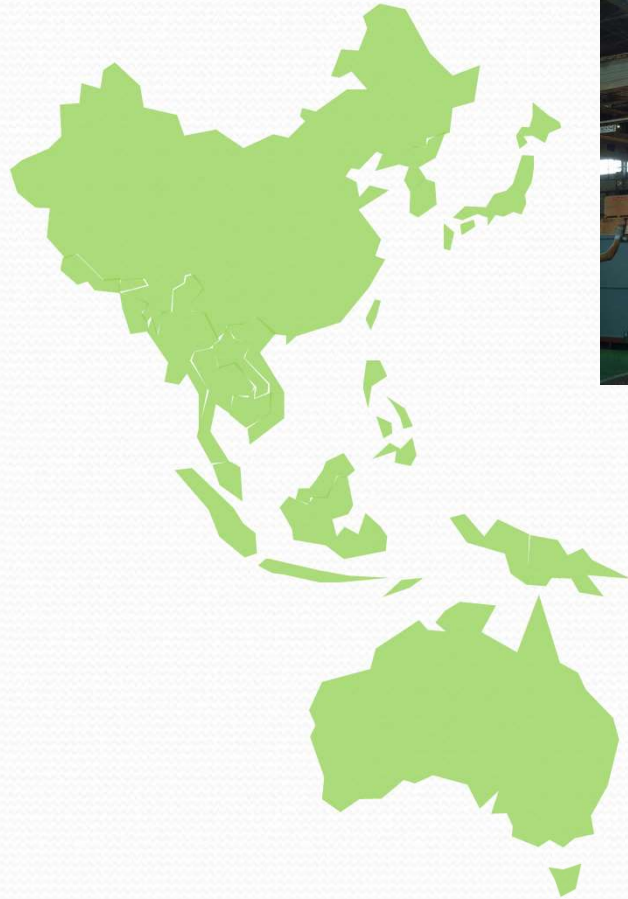
**Johkasou**



**Pumps**



# Kubota Johkasou in Overseas



Transportation



Indonesia



Myanmar



China



Vietnam

- Sold to 15 countries outside Japan, mainly in China and Southeast Asia.
- Servicing many kinds of building (apartment, resident areas, hospital, etc.)



# Thilawa SEZ Zone a Development Project



## Water Purification Plant

- Treatment method : Coagulating Sedimentation + Sand Filtration
- Capacity : 3,000 m<sup>3</sup>/d (1,500 m<sup>3</sup>/d \* 2 Line)

## Sewage Treatment Plant

- Treatment method : Activated sludge process + Sand Filtration + Activated carbon
- Capacity : 2,400 m<sup>3</sup>/d (1,200 m<sup>3</sup>/d \* 2 Line)

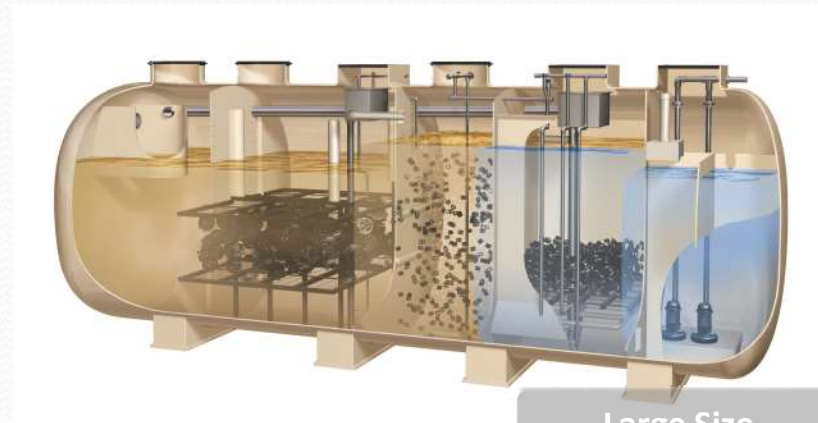


# Structure and Treatment Performance of Johkasou

## Structure and function Approval of Johkasou type in Japan



Small Size



Large Size



Middle Size

Performance tests ※ and approvals of the type (Minister of Land, infrastructure and Transport and Johkasou Law) are required for Johkasou.

※ by the authorized third party



# Structure and Treatment Performance of Johkasou

## Certification Document of Johkasou

認定書

国近整建安第51号

大阪市浪速区敷津東一丁目2番47号  
株式会社クボタ  
代表取締役 木股昌俊

平成27年9月4日付けで申請のあった下記の浄化槽の型式については、建築基準法及びこれに基づく命令で定める構造基準に適合すると認められるので、浄化槽法第13条第1項の規定に基づき、工場において製造される浄化槽の型式として認定する。

平成27年 9月 9日

国土交通省近畿地方整備局  
山田 邦博

記

1. 認定番号等

認定番号	浄化槽の名称	工場の所在地及び名称	浄化槽の概要		
			処理方式	総処理能力 (人)	日平均処理量 (m <sup>3</sup> /日)
6-15-H-002	クボタ浄化槽HCZ-12型	滋賀県南都市南松町2-1	建築基準法第68条の25第1項の規定に基づき、同法施行令第35条第1項の規定に適合する団体共同処理方式	12	2.4
6-15-H-002-1	クボタ浄化槽HCZ-14型	株式会社クボタ 滋賀工場		14	2.8
6-15-H-002-2	クボタ浄化槽HCZ-15型	茨城県北茨城市磯原町上相田		15	3.0
6-15-H-002-3	クボタ浄化槽HCZ-16型	1099-46		16	3.2
6-15-H-002-4	クボタ浄化槽HCZ-18型	日東電機株式会社 磯原工場		18	3.6
6-15-H-002-5	クボタ浄化槽HCZ-20型	沖縄県うるま市具志川3445番地		20	4.0
6-15-H-002-6	クボタ浄化槽HCZ-21型	有限会社三和工業		21	4.2
6-15-H-002-7	クボタ浄化槽HCZ-25型	兵庫県赤穂市在野町久崎580番地		25	5.0
6-15-H-002-8	クボタ浄化槽HCZ-30型	池田化成工業株式会社 上月工場		30	6.0
6-15-H-002-9	クボタ浄化槽HCZ-35型	池田化成工業株式会社 上月工場		35	7.0
6-15-H-002-10	クボタ浄化槽HCZ-40型	滋賀県甲賀市水口町下山60-1		40	8.0
6-15-H-002-11	クボタ浄化槽HCZ-45型	株式会社吉中化成		45	9.0
6-15-H-002-12	クボタ浄化槽HCZ-50型			50	10.0

2. 別添図書

- (1) 型式適合認定書の写し
- (2) 製造方法及び製造設備の概要を記載した書面
- (3) 検査方法及び検査設備の概要を記載した書面
- (4) 施工要領書
- (5) 維持管理要領書

No.51

### CERTIFICATE

**KUBOTA CORPORATION**  
2-47, Shikitsuhigashi 1-chome, Naniwa-ku, Osaka, Japan  
President Masatoshi Kimata

Pursuant to Article 1 Clause 13 of Johkasou Law, this is to certify that the below Johkasou models applied in September 04, 2015 are models of Johkasou manufactured in factory because these are compliant with building standards determined in The Building Standard Law and another related decrees.

September 09, 2015

Ministry of Land, Infrastructure and Transport  
Kinki Regional Development Bureau  
Yamada Kunhiro

Notes

1. Certificate No.

Cert. No.	Models	Factory Location	Outline of Johkasou		
			Treatment method	Population (people)	Average flow rate (m <sup>3</sup> /day)
6-15-H-002	Kubota Johkasou HCZ-12	Kubota Corporation - Shiga Factory	Moving bed	12	2.4
6-15-H-002-1	Kubota Johkasou HCZ-14	2-1 Tokumatsubocho, Kotoh-shi, Shiga	biofilm reactor	14	2.8
6-15-H-002-2	Kubota Johkasou HCZ-15	Nitto Corporation - Isehara Factory	(Pursuant to	15	3.0
6-15-H-002-3	Kubota Johkasou HCZ-16	1099-46 Isehara-shi Kanetsuda	Article 25.1	16	3.2
6-15-H-002-4	Kubota Johkasou HCZ-18	Kinoharashi-shi Ihara	Clause 68 of The	18	3.6
6-15-H-002-5	Kubota Johkasou HCZ-20	Mitsuba Kogyo Co., Ltd	Building Standard	20	4.0
6-15-H-002-6	Kubota Johkasou HCZ-21	3445 Goshikubo, Utsunomiya-shi, Omiya	Law, these are	21	4.2
6-15-H-002-7	Kubota Johkasou HCZ-25	Itoho Kasei Kogyo Co., Ltd. - Kozaki	compliant with	25	5.0
6-15-H-002-8	Kubota Johkasou HCZ-30	Factory	standards	30	6.0
6-15-H-002-9	Kubota Johkasou HCZ-35	580 Kasaki, Sayo-shi, Sayo-gun, Hyogo	prescribed in	35	7.0
6-15-H-002-10	Kubota Johkasou HCZ-40	Yoshinaka Kasei Co., Ltd	Article 1 Clause	40	8.0
6-15-H-002-11	Kubota Johkasou HCZ-45	40-1 Minakuchicho Shimoyama, Koka	35 of same law)	45	9.0
6-15-H-002-12	Kubota Johkasou HCZ-50	Shiga		50	10.0

2. Attached drawings and documents:

- 1) Copy of Certificate of Conformity
- 2) Explanation of manufacturing method and outline of machines & equipment
- 3) Explanation of inspection method and inspection equipment
- 4) Installation Manual

we are selling the same models of Johkasou certified in Japan



# What is 「Johkasou」!

To be called “Johkasou”...

- Its treatment performance must conform with the Japanese Johkasou law
- It is produced under strict production management based on Japanese industrial standards



**Arrangement for elimination of poor-quality products**





# Operation, Maintenance and Inspection of Johkasou

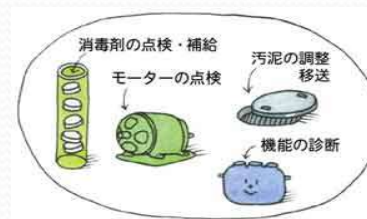
## Technologies demanded for Johkasou

### ■ Product



Johkasou inspector

### ■ Maintenance



Johkasou operator



Desludging



Operation & Maintenance

### ■ Installation



Johkasou installation worker

### ■ Instructions and Directions for use



End user



*Thank you for your kind attention !*

**Please visit our website at:**

**<http://www.kubota-global.net/products/johkasou/>**