



Legal System of Decentralized Domestic Wastewater Treatment Management in Japan including the Johkasou Act

19th December, 2023

Mr. Ryoma SATO

Section Chief, Office for Promotion of Johkasou



Office for Promotion of Johkasou
Waste Management Division
Environmental Regeneration and Material Cycles Bureau
Ministry of the Environment
Government of JAPAN

<https://www.env.go.jp/recycle/jokaso/>

Overall concept of water environment improvement and related legal framework



Johkasou Act

■ Purpose

- Strengthen **regulations** of manufacturing, installation, operation, maintenance and desludging of Johkasou.
- Provides **qualifications** for Johkasou installation workers and operators
- Provides **registration** systems for Johkasou installation vendors and maintenance vendors
- Provide **licensing** systems for desludging vendors



Promotion of domestic wastewater treatment by Johkasou for conservation of water quality in public water area, preservation of the living environment and improvement of public health

■ Definition

- Johkasou is the decentralized wastewater treatment facility that can treat both **black water** and **grey water** from household, building and so on and discharge effluent comply with effluent standards.
- Johkasou should be installed when installing a flush toilet under the Building Standard Law, unless the wastewater is discharged to sewerage systems.

■ Related Laws

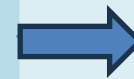
Johkasou Act

Enacted in 1983



Enforcement Ordinance

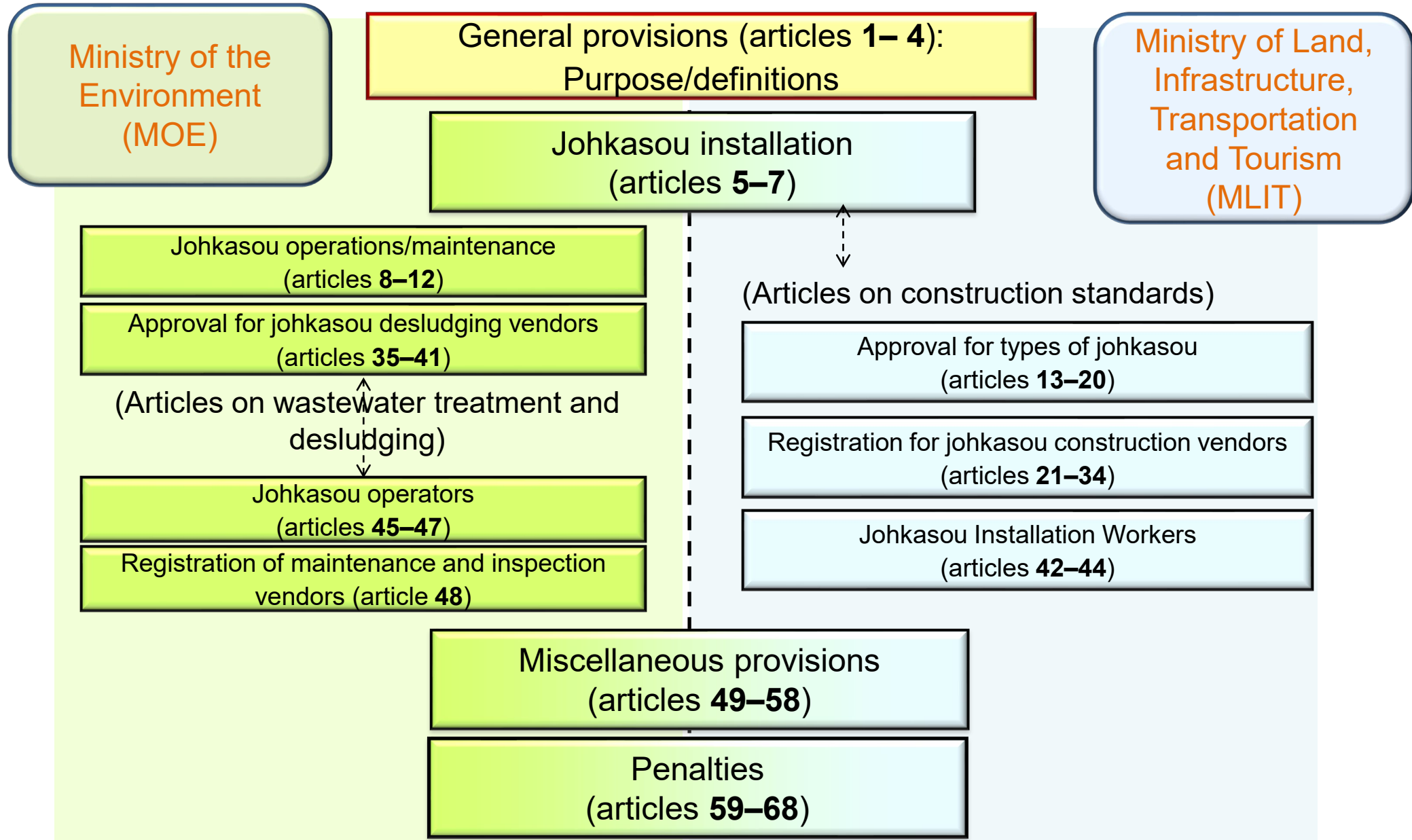
Define the scale of Johkasou which need Johkasou Operators etc.



Enforcement Regulations

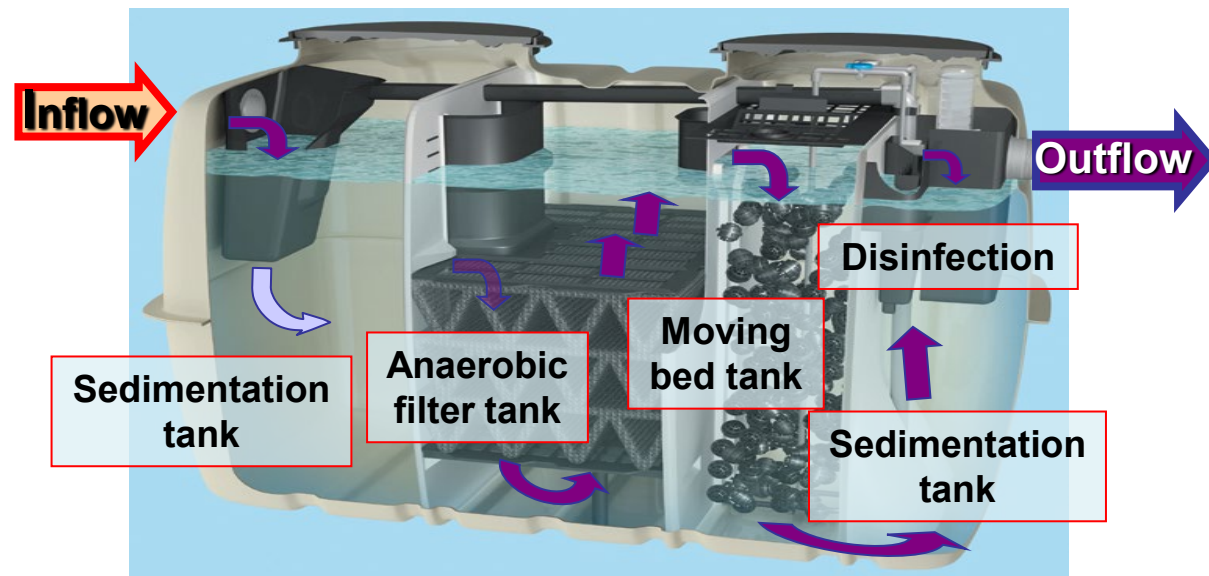
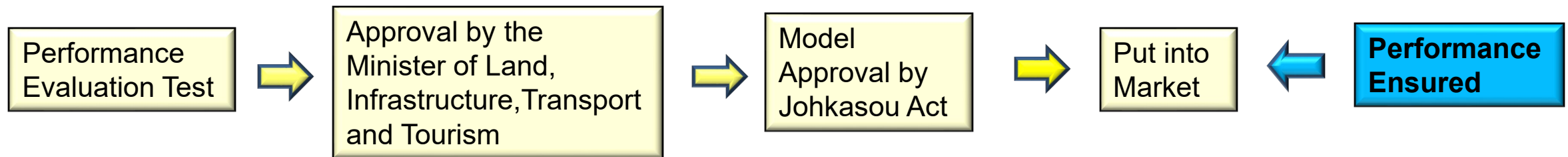
Define the period of inspection, desludging or the technical standard of desludging etc.

Outline of Articles and its jurisdiction in Johkasou Act



Approval process for types of Johkasou (Johkasou Act, Article 13)

- Parties intending to manufacture Johkasou in production plants shall obtain approval from the Ministry of Land, Infrastructure, Transport and Tourism (MLIT) for the type of Johkasou to be manufactured (does apply to test manufacturing)
- This process is suitable to Performance Evaluation System



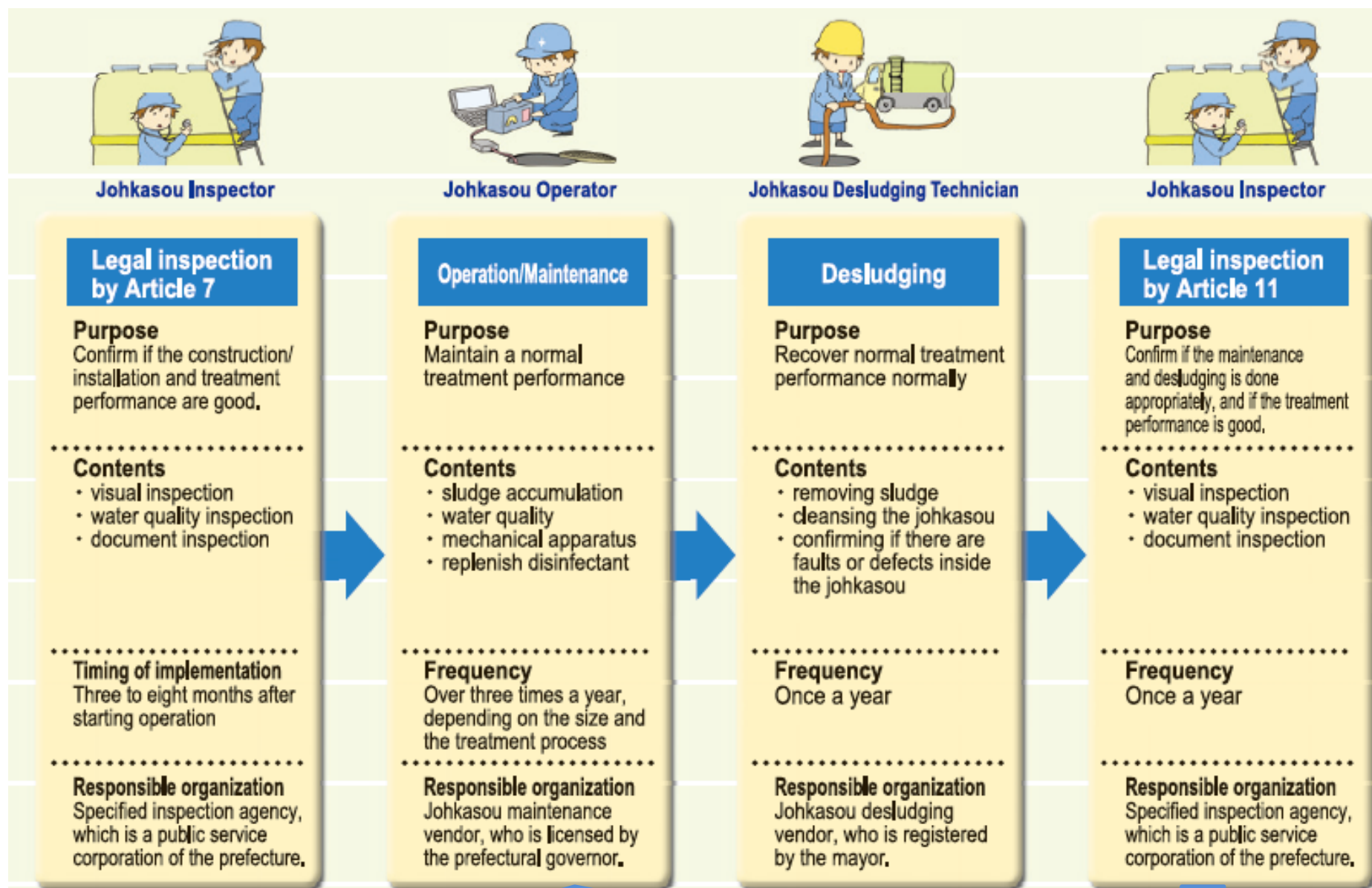
Sample of Performance Evaluation Type Johkasou

The Building Center of Japan

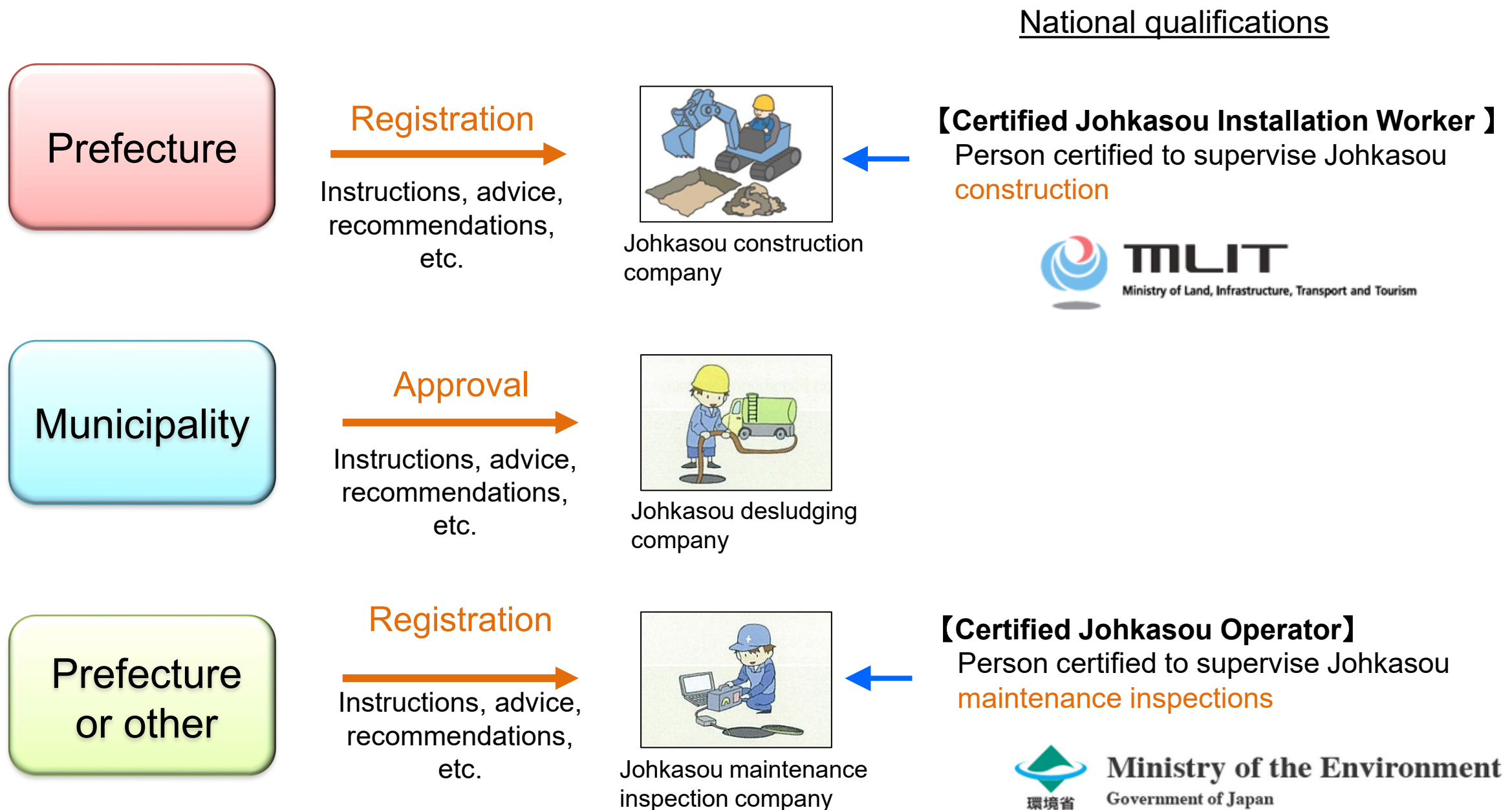
- ✓ Johkasou's Performance Evaluation System
- ✓ Detail of Johkasou's Performance Evaluation System

https://www.bcj.or.jp/upload/rating/bizunit/hyoutei/joushi_hyoukahuhou.pdf

Inspection and Maintenance of Johkasou


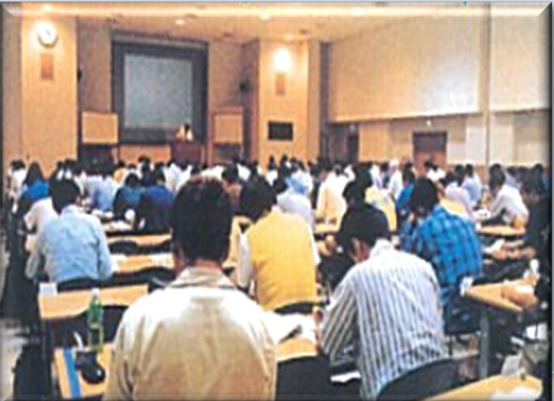


Registration process and qualifications system



Training courses for Johkasou technicians

- Johkasou technicians should acquire extensive knowledge on not only wastewater treatment/johkasou, but also water environment conservation and public health.
- Curriculums for johkasou operator and johkasou installation worker are as shown below.

Johkasou Operator by Article 45	Johkasou Installation Worker by Article 42
<ul style="list-style-type: none"> ● Fundamental of johkasou 8 H ● Laws and regulations related with johkasou 4 H ● Structure and function of johkasou 22 H ● Introduction to installation of johkasou 4 H ● Operation and maintenance of johkasou 30 H ● Water quality management of johkasou 10 H ● Introduction to desludging of johkasou 2 H 	<ul style="list-style-type: none"> ● Fundamental of johkasou 8 H ● Laws and regulations related with johkasou 3 H ● Structure and function of johkasou 15 H ● Management of johkasou installation 8 H ● Introduction to O&M and desludging of johkasou 3 H
 <p style="text-align: right;">Total 80 Hours (13 Days) +Test 2 Hours</p>	 <p style="text-align: right;">Total 37 Hours (5 Days) +Test 2 Hours</p>

THANK YOU FOR YOUR KIND ATTENTION.

At Kikuchi Gorge, Kikuchi City, Kumamoto Prefecture

