



GOVERNMENT-TO-GOVERNMENT SEMINAR ON DECENTRALIZED WASTEWATER TREATMENT



Behind the Counter:

Environmental Challenges of Fast-Food Chains on Philippine Water Systems

Presented by: Mr. Darlito Guamos
Environmental Management Unit – Jollibee Group



EMB CENTRAL OFFICE - WATER QUALITY MANAGEMENT



MINISTRY OF THE ENVIRONMENT - JAPAN



JOLLIBEE GROUP HISTORY AND MILESTONES





HISTORY AND MILESTONES

2023



Jollibee Group launches its Sustainability Agenda "Joy for Tomorrow".

Aims to strengthen the company's commitment to sustainable business practices. The agenda centers on the key pillars of Food, People, and Planet.





GOVERNMENT-TO-GOVERNMENT SEMINAR ON DECENTRALIZED WASTEWATER TREATMENT



Our Purpose

Spreading joy through Superior taste



Our Vision

To be one of the Top 5 Restaurant Companies in the World

PURPOSE, VISION, AND VALUES



The JFC Values



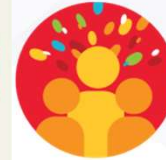
Customer Focus



Speed with Excellence



Humility to Listen and Learn



Spirit of Family and Fun



Integrity

ENVIRONMENTAL COMPLIANCE



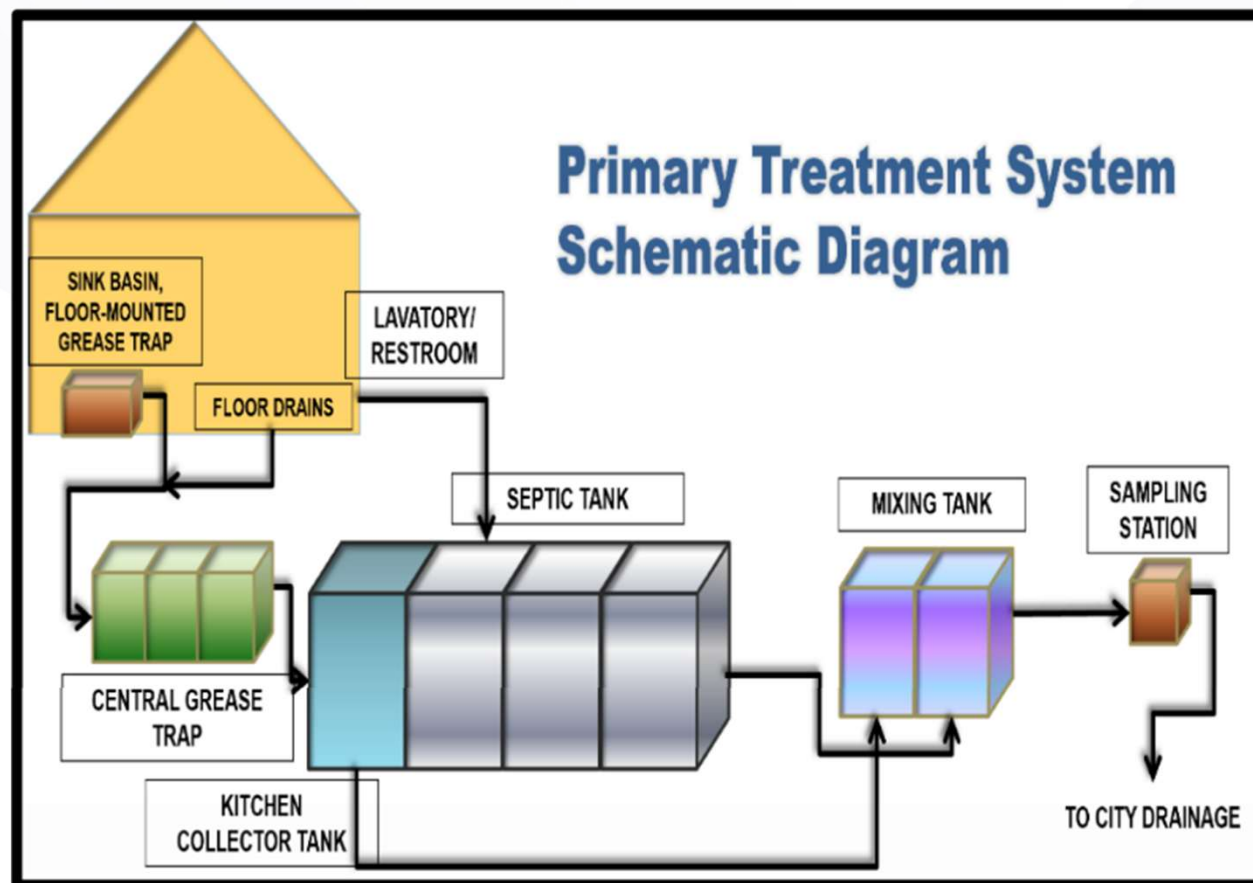
EMB CENTRAL OFFICE - WATER QUALITY MANAGEMENT



MINISTRY OF THE ENVIRONMENT - JAPAN

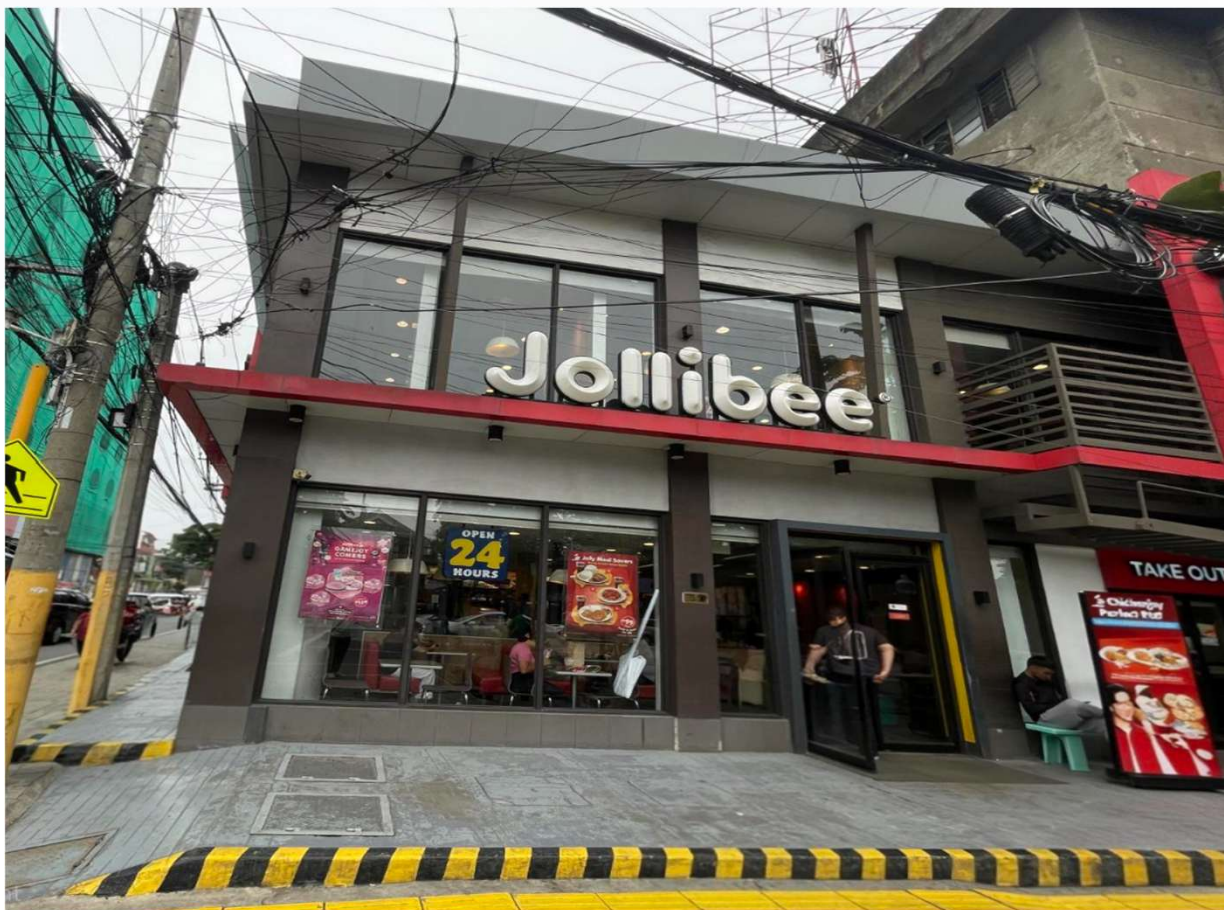


QSR WASTEWATER TREATMENT SYSTEM BEFORE DAO 2016-08





GOVERNMENT-TO-GOVERNMENT SEMINAR ON DECENTRALIZED WASTEWATER TREATMENT



EMB CENTRAL OFFICE - WATER QUALITY MANAGEMENT



MINISTRY OF THE ENVIRONMENT - JAPAN



CHALLENGES:

Our stores are currently enhancing our wastewater management to be able to adhere with the

Limited Interconnection Facility

Limited STP Providers

Business Viability

Operation and Maintenance

LGU Requirements





LIMITED INTERCONNECTION FACILITY

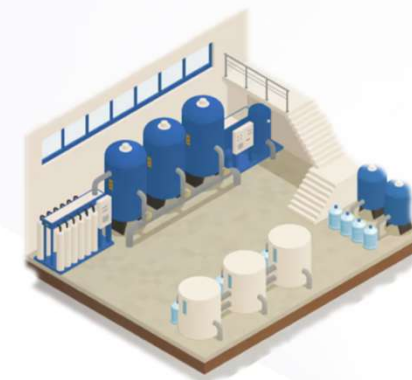
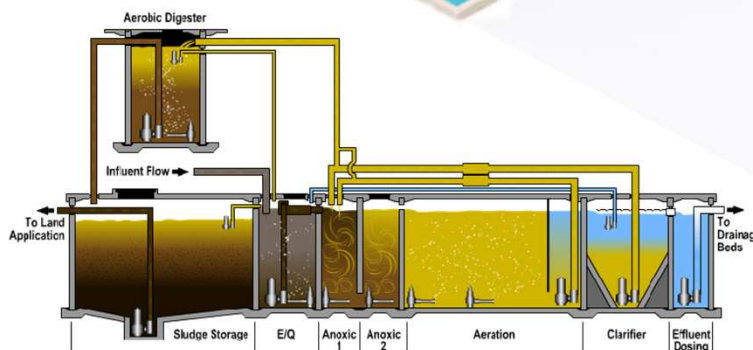
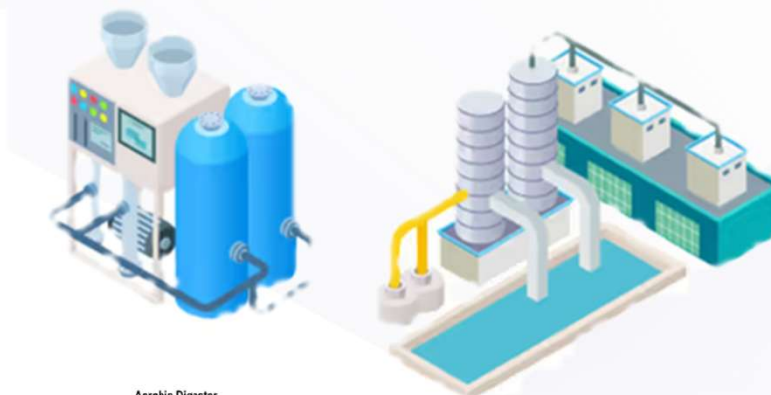


Water Concessionaire WWTP





LIMITED STP PROVIDERS FOR QSR





BUSINESS VIABILITY

CAPEX (STP Cost): 2M to 4M

OPEX (Annual): 500K to 700K





OPERATION AND MAINTENANCE





LGU REQUIREMENTS





Together, Let's Continue to Spread Joy and Protect the Environment

