

Johkasou Seminar in Republic of the Philippines



FujiClean has over 60 years of experience developing Johkasou technologies.

60年以上にわたる浄化槽技術の開発

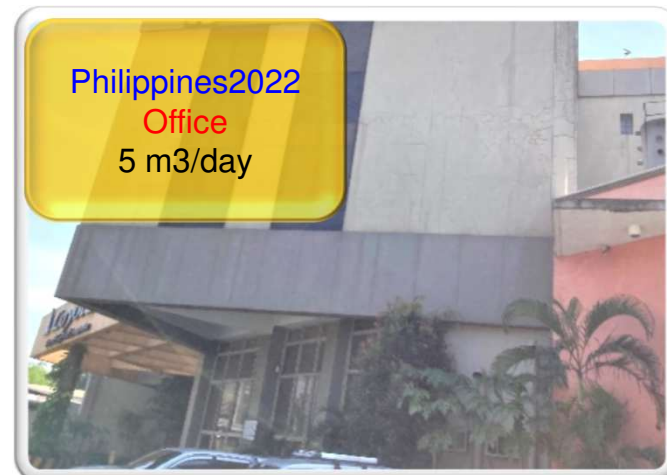
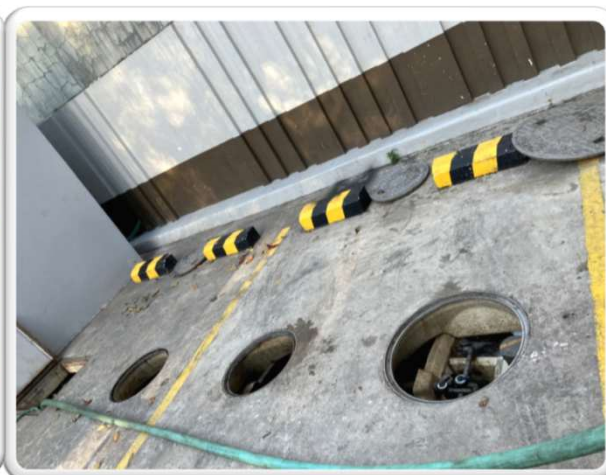
FujiClean Johkasou sales exceeding 50,000 units a year.

年間5万基以上の販売実績



Developing an original diaphragm air pump

Project Histories・販売実績



Selection of Johkasou・浄化槽の選定

Based on design information such as the building's purpose and expected number of users, we select the Johkasou.

<Term> P:people, d:day
 < Waste water from Nursing home >
 • The number of people that use the system 30 P
 • The number of staff 15 P
 • The number of meal 135 P (45*3)

<Daily hydraulic loading (m3/d)>
 Toilet : 1.62
 Kitchen : 1.01
 Bath/shower : 2.40
 Laundry : 1.80
 Other (Handwash etc.) : 0.24
 Total : 7.07 m3/d

Effluent loadings
 • Effluent regulation BOD 50 mg/l 0.35 kg/d
 NO3 0.10 kg/d
 NH4 0.03 kg/d
 T-N 18 mg/l 0.13 kg/d
 T-P 4 mg/l 0.03 kg/d

Example

	Unit BOD loading(g/P*d)	Unit T-N loading(g/P*d)	Unit BOD loading(g/P*d) Visitors/Outpatients	Unit T-N loading(g/P*d) Visitors/Outpatients	BOD loadings (kg/d)	T-N loadings (kg/d)
Toilet	10.44	6.87	10.44	6.87	0.47	0.31
Kitchen	3.83	0.23	0.00	0.00	0.52	0.01
Bath/shower	1.00	0.00	0.00	0.00	0.03	0.00
Laundry	14.00	0.00	0.00	0.00	0.42	0.00
Other	0.80	0.00	0.00	0.00	0.02	0.00
TOTAL	30.07	7.10	10.44	6.87	1.46	0.32

Premise T-N_{out} ≒ NO3 T-Nin ≒ NH4

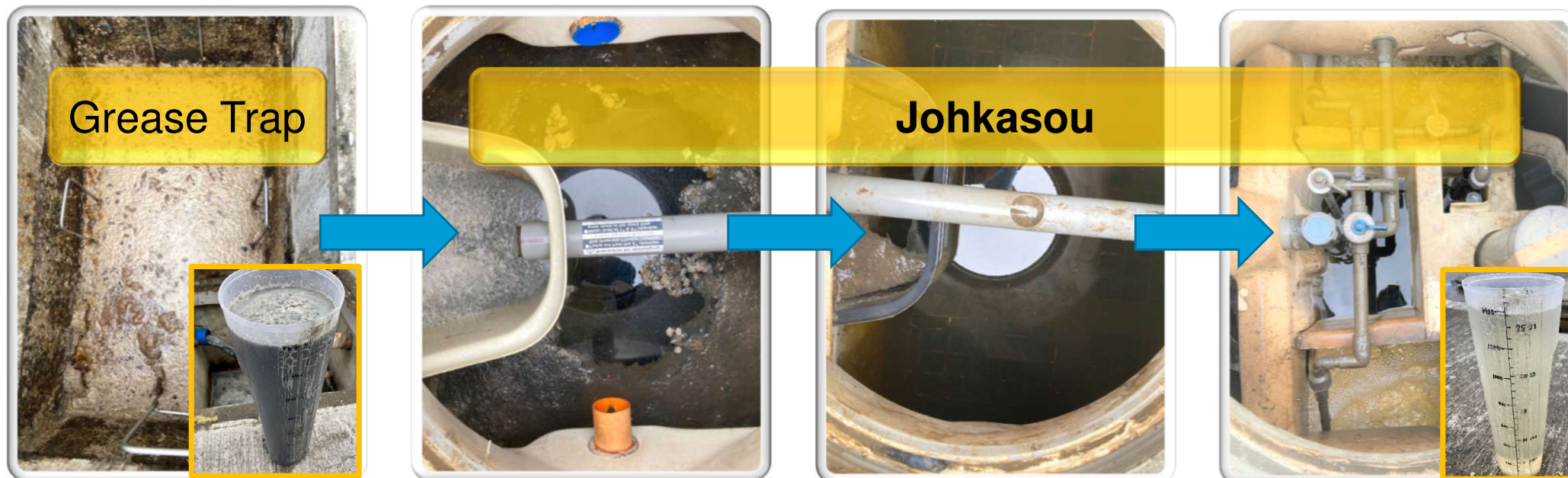
○Loadings to remove

	Influent loadings	Effluent loadings	
BOD loading	1.46 kg/d	0.35 kg/d	= 1.11 kg/d
T-N loading	0.32 kg/d	0.13 kg/d	= 0.19 kg/d
NH4 loading	0.32 kg/d	0.03 kg/d	= 0.29 kg/d
T-P loading	0.03 kg/d	0.03 kg/d	= 0.00 kg/d



Which should be selected?

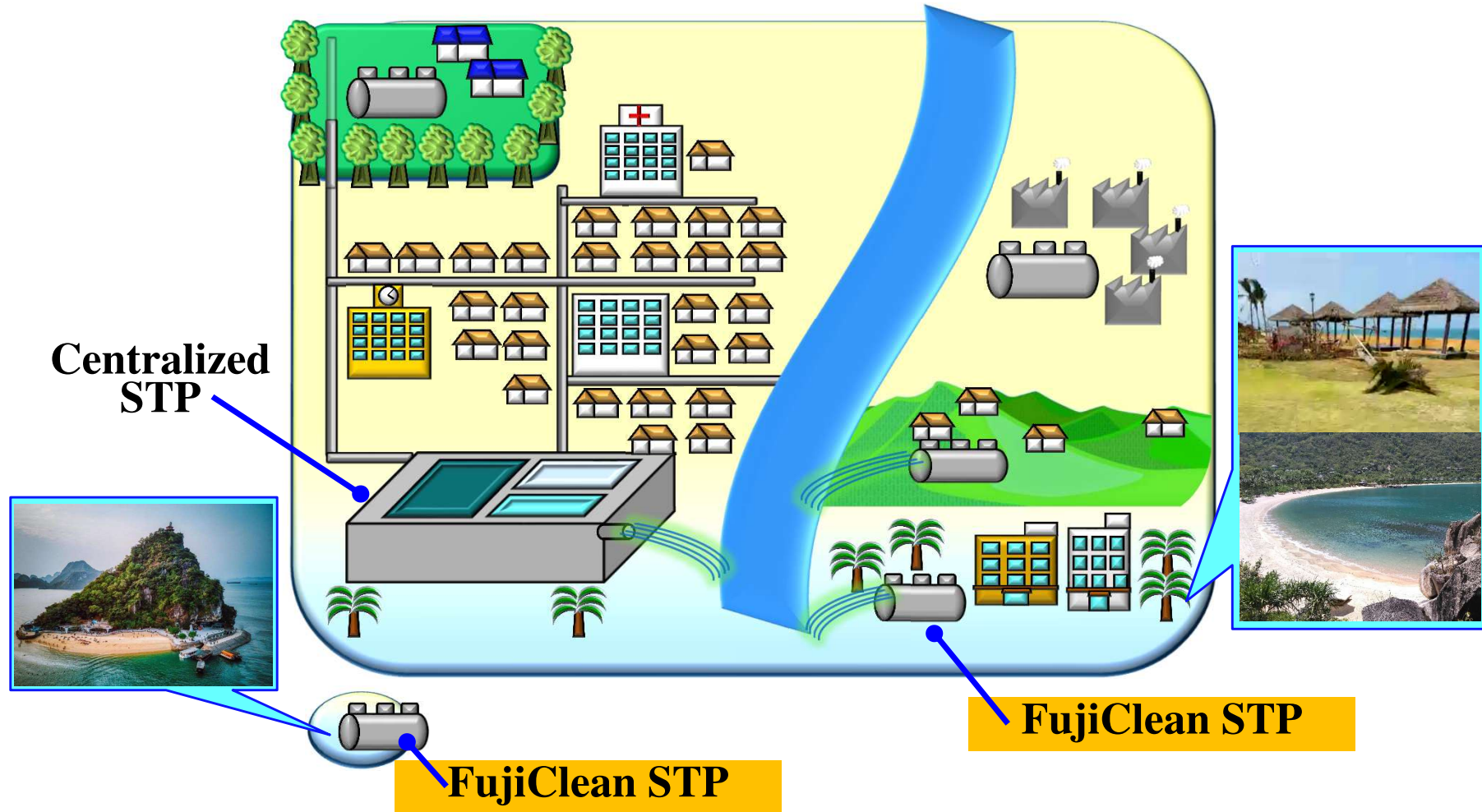
The Importance of Maintenance・維持管理の重要性



Johkasou are systems that require maintenance.
Adjusting them every few months ensures they continue to function properly.

浄化槽は維持管理が必要なシステムです。
数か月に一度調整することで、機能が保たれます。

JICA Project in Baguio





Let's restore natural waterways and make them clean enough for children to play in.